

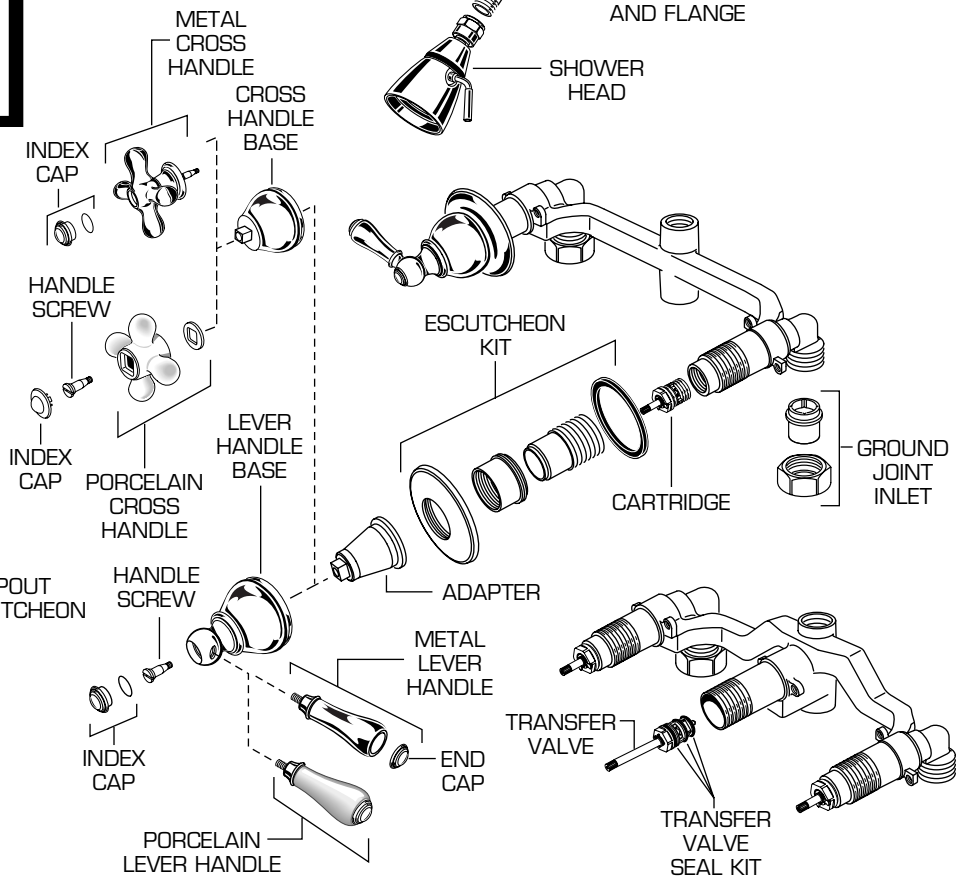
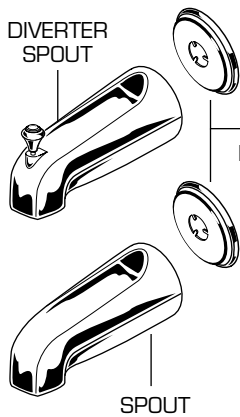
# HAMPTON

## TWO and THREE HANDLE BATH/SHOWER MODEL NUMBERS

**7220.700 SERIES**  
**7221.700 SERIES**  
**7222.700 SERIES**  
**7225.700 SERIES**

★ Replace the "YYY" with appropriate finish code

|                        |     |
|------------------------|-----|
| CHROME                 | 002 |
| POLISHED BRASS         | 099 |
| SATIN (PVD)/CHROME MIX | 221 |
| VELVET                 | 285 |
| VELVET/BRASS           | 287 |
| SATIN (PVD)            | 295 |
| SATIN/BRASS MIX (PVD)  | 297 |
| CHROME/POL. BRASS      | 299 |



| REPAIR PARTS                 | DESCRIPTION                 | PART NUMBER ★  | PKG QTY      |   |
|------------------------------|-----------------------------|----------------|--------------|---|
| Handle Parts                 | Index Cap                   | 021470-YYY0A   | 1            |   |
|                              | Handle Screw                | 918428-0070A   | 1            |   |
|                              | Porcelain Lever Handle      | 060353-YYY0A   | 1            |   |
|                              | Metal lever handle          | 060354-YYY0A   | 1            |   |
|                              | End Cap                     | 021470-YYY0A   | 1            |   |
|                              | Lever Handle Base           | 916503-YYY0A   | 1            |   |
|                              | Metal Cross Handle          | 013307-YYY0A   | 1            |   |
|                              | Porcelain Cross Handle      | 042692-0070A   | 1            |   |
|                              | Index Cap (Porcelain Cross) | 013311-YYY0A   | 1 Set        |   |
|                              | Cross Handle Base           | 908501-YYY0A   | 1            |   |
|                              | Handle Adapter              | 923002-0070A   | 1            |   |
|                              | Faucet Parts                | Cartridge      | 028610-0070A | 1 |
|                              |                             | Escutcheon Kit | 060453-YYY0A | 1 |
| Ground Joint Inlet           |                             | 075060-0070A   | 1 Pair       |   |
| Shower Arm and Flange        |                             | 060351-YYY0A ○ | 1            |   |
| Shower Head                  |                             | 060339-YYY0A ○ | 1            |   |
| Diverter Tub Spout (IPS)     |                             | 060340-YYY0A ○ | 1            |   |
| Diverter Tub Spout (Slip-on) |                             | 060409-YYY0A ○ | 1            |   |
| Tub Spout (Slip-on)          |                             | 066081-YYY0A   | 1            |   |
| Transfer Valve Kit           |                             | 012316-0070A   | 1            |   |
| Transfer Valve Seal Kit      |                             | 012325-0070A   | 1            |   |
| Spout Escutcheon             | 907520-YYY0A                | 1              |              |   |

○ Available in .297 finish.